

Generic Slides | Phone: 412/492-7272 | Fax: 412/492-7171 | Email: sales@genericslides.com

X-Y Slide Tables

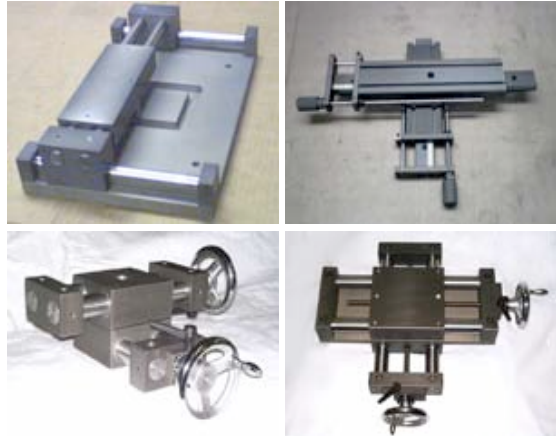
All slide models are available as X-Y Tables and Stages. They offer the same features and benefits as their single axis slide series counterparts.

X-Y Tables and stages are configured for:

- Manual positioning
- Motor ready for your drives
- DC motor drive
- Stepping motor drive
- Servo motor drive

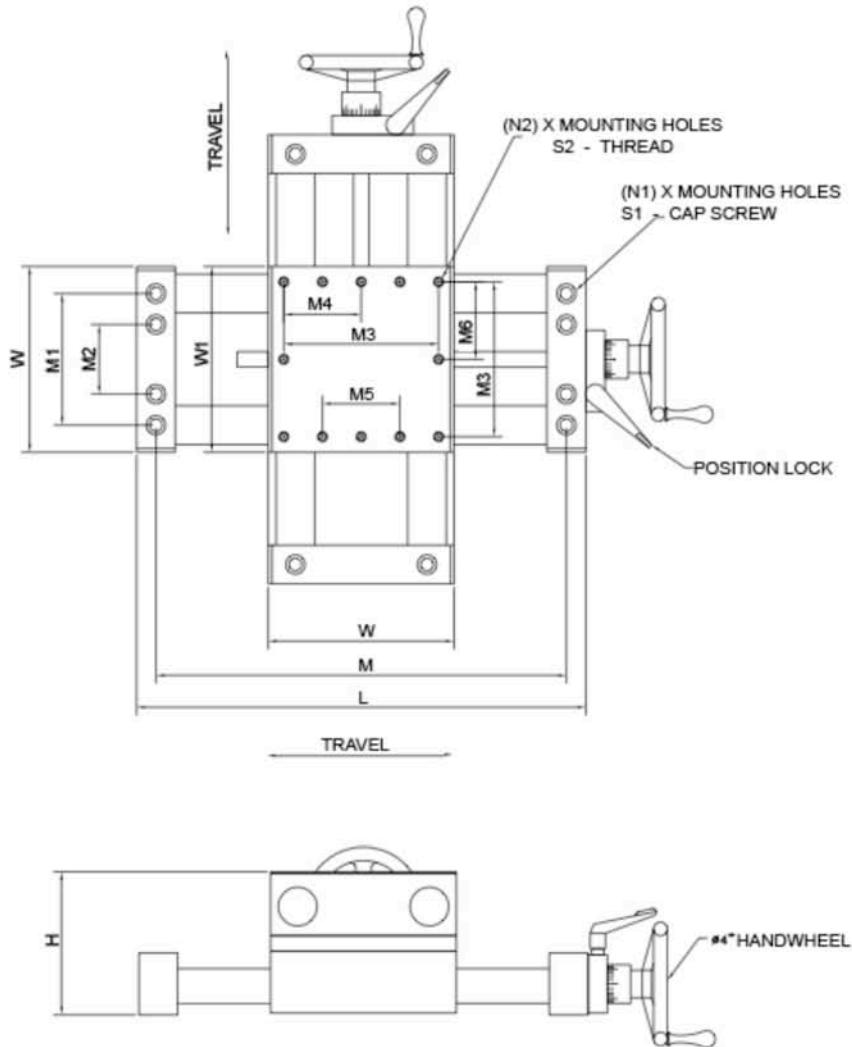
[How to Order - Part # and Travels](#)

[MS Series - XY Slide Table Dimensions](#)



[Download \(pdf\) printable version of this page](#)

MS Series - XY Slide Table Dimensions



T = Travel

Series	L	H	W	W1	M	M1	M2	N1	S1	N2	S2	M3	M4	M5	M6
MS200	3.0+T	2.50	2.00	2.00	2.5+T	1.25	N/A	4	1/4	4	1/4-20	1.50	N/A	N/A	N/A
MS315	4.5+T	3.50	3.15	3.00	3.75+T	1.88	N/A	4	5/16	4	1/4-20	2.50	N/A	N/A	N/A
MS400	6.5+T	4.75	4.00	4.00	5.25+T	2.38	N/A	4	3/8	4	5/16-18	3.25	N/A	N/A	N/A
MS600	8.5+T	4.63	6.00	6.00	7.25+T	4.25	N/A	4	3/8	6	5/16-18	5.00	2.50	N/A	N/A
MS850	11+T	8.25	8.50	8.00	9.5+T	7.63	2.38	8	3/8	8	3/8-16	6.00	N/A	2.38	N/A
MS1000	13+T	8.25	10.00	10.00	11.5+T	9.13	2.38	8	3/8	8	3/8-16	7.50	N/A	2.50	N/A
MS1200	15+T	8.75	12.00	12.00	13.5+T	11.13	5.88	8	3/8	8	3/8-16	9.00	4.50	N/A	4.50
MS1800	21+T	8.75	18.00	18.00	19.5+T	17.13	11.88	8	3/8	8	3/8-16	15.00	7.50	N/A	7.50

X-Y Slide Tables and Stages

How to Order

Part Number = (Series) - (X-Travel) - (Material Option) - (Other Options)

Example - MS600-8-4-AL-S3

MS600 series slide	8" travel on X-Axis	4" Travel on Y-Axis,	Hardcote Aluminum construction (standard on MS series Slides),	1/2-20 UNF drive screw (standard on MS series slides)
--------------------	---------------------	----------------------	--	---

Series	X-Travel	Y-Travel	Material Options	Other Options
BS45	1" to 16"	1" to 16"	ST = Steel	NS = No drive screw
MS200	1" to 20"	1" to 20"	AL= Hardcote Alum.	S1 = 10-32 UNF drive screw
MS315	1" to 24"	1" to 24"	D= Delrin	S2 = 1/4-20 UNC Drive screw
MS400	1" to 36"	1" to 36"	CI= Cast Iron	S3 = 1/2-20 UNF drive screw
MS600	1" to 72"	1" to 72"	SST= Stainless Steel	S4 = 1/2-13 UNC drive screw
MS850	1" to 144"	1" to 72"	CM = Custom material	S5 = 5/8-10 Acme drive screw
MS1000	1" to 144"	1" to 72"		S6 = 3/4-5 Acme drive screw
MS1200	1" to 240"	1" to 72"		S7 = 3/4-10 Acme drive screw
MS1800	1" to 240"	1" to 72"		S8 = 1.0-5 Acme drive screw
UDH2	1" to 16"	1" to 16"		S9 = 1.0-10 Acme drive screw
UDH3	1" to 24"	1" to 24"		CS = Custom screw - (provide description)
UDH4	1" to 36"	1" to 36"		HD1.5 = 1.5" Handwheel
UDH6	1" to 36"	1" to 36"		HD2 = 2" Handwheel
UDH8	1" to 36"	1" to 36"		HD3 = 3" Handwheel
UDH10	1" to 36"	1" to 36"		HD4 = 4" Handwheel
UDL2	1" to 36"	1" to 36"		HD6 = 6" Handwheel
UDL3	1" to 36"	1" to 36"		HD8 = 8" Handwheel
UDL4	1" to 36"	1" to 36"		HD10 = 10" Handwheel
UDL6	1" to 36"	1" to 36"		RCH = Ratcheting Crank Handle
UDL8	1" to 36"	1" to 36"		D = Digital position indicator
UDL10	1" to 36"	1" to 36"		CMT = Custom mounting (provide drawing)
UDC3	1" to 24"	1" to 24"		MR = Motor ready (specify motor)
				DC = DC motor drive
				SM = Smart motor drive (stepping)
				Servo = Servo motor drive

Note:

- The X-Axis is always the bottom or primary axis.
- The Y-Axis is the upper, or secondary axis.
- When looking down on the table with the x-axis drive end pointing toward you, the Y-Axis drive is on the right. This is standard or right hand configuration.
- To order a slide table with the Y-Axis drive pointing to the left ask for the left hand version.

GENERIC SLIDES

1049 William Flynn Highway | Suite 300 | Glenshaw, PA 15116
 Phone: 412/ 492-7272 | Fax: 412/ 492-7171 | Email: sales@genericslides.com