



Specializing in:

Long Travels
Heavy Payloads
Application Specific Solutions

Quality Products Since 1971
Terms & Conditions



Get Your Quote Today!

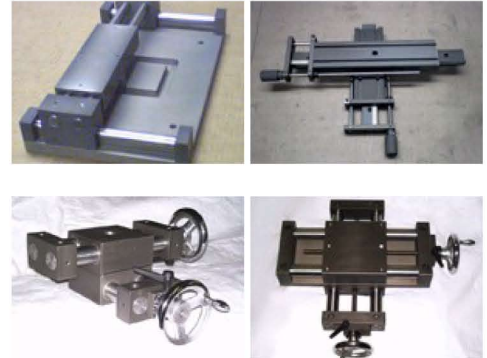


X-Y Slide Tables

All slide models are available as X-Y Tables and Stages. They offer the same features and benefits as their single axis slide series counterparts.

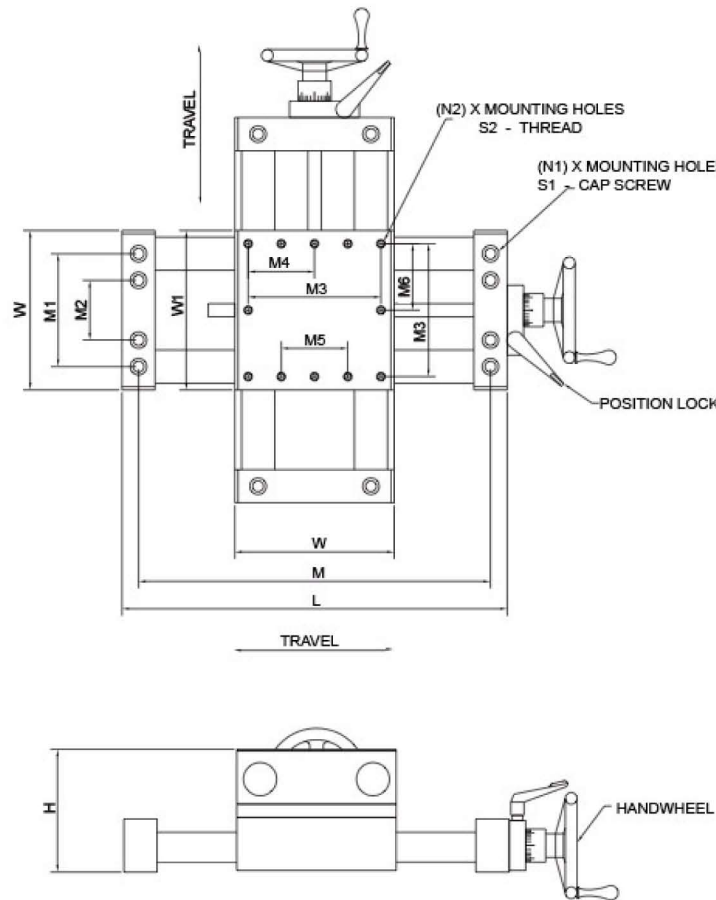
X-Y Tables and stages are configured for:

- Manual positioning
- Motor ready for your drives
- DC motor drive
- Stepping motor drive
- Servo motor drive



How to Order - Part # and Travels

MS Series - XY Slide Table Dimensions



MS Series - XY Slide Table Dimensions

Series	L	H	W	W1	M	M1	M2	N1	S1	N2	S2	M3	M4	M5	M6
MS200	3.0+T	2.50	2.00	2.00	2.5+T	1.25	N/A	4	1/4	4	1/4-20	1.50	N/A	N/A	N/A
MS315	4.5+T	3.50	3.15	3.00	3.75+T	1.88	N/A	4	5/16	4	1/4-20	2.50	N/A	N/A	N/A
MS400	6.5+T	4.75	4.00	4.00	5.25+T	2.38	N/A	4	3/8	4	5/16-18	3.25	N/A	N/A	N/A
MS600	8.5+T	4.63	6.00	6.00	7.25+T	4.25	N/A	4	3/8	6	5/16-18	5.00	2.50	N/A	N/A
MS850	11+T	8.25	8.50	8.00	9.5+T	7.63	2.38	8	3/8	8	3/8-16	6.00	N/A	2.38	N/A
MS1000	13+T	8.25	10.00	10.00	11.5+T	9.13	2.38	8	3/8	8	3/8-16	7.50	N/A	2.50	N/A
MS1200	15+T	8.75	12.00	12.00	13.5+T	11.13	5.88	8	3/8	8	3/8-16	9.00	4.50	N/A	4.50
MS1800	21+T	8.75	18.00	18.00	19.5+T	17.13	11.88	8	3/8	8	3/8-16	15.00	7.50	N/A	7.50

X-Y Slide Tables and Stages

How to Order



MS600	8	4
MS600 series slide	8" travel on X-Axis	4" Travel on Y-Axis

Series	X-Travel	Y-Travel
BS45	1" to 16"	1" to 16"
MS200	1" to 20"	1" to 20"
MS315	1" to 24"	1" to 24"
MS400	1" to 36"	1" to 36"
MS600	1" to 72"	1" to 72"
MS850	1" to 144"	1" to 72"
MS1000	1" to 144"	1" to 72"
MS1200	1" to 240"	1" to 72"
MS1800	1" to 240"	1" to 72"
UDH2	1" to 16"	1" to 16"
UDH3	1" to 24"	1" to 24"
UDH4	1" to 36"	1" to 36"
UDH6	1" to 36"	1" to 36"
UDH8	1" to 36"	1" to 36"
UDH10	1" to 36"	1" to 36"
UDL2	1" to 36"	1" to 36"
UDL3	1" to 36"	1" to 36"
UDL4	1" to 36"	1" to 36"
UDL6	1" to 36"	1" to 36"
UDL8	1" to 36"	1" to 36"
UDL10	1" to 36"	1" to 36"
UDC3	1" to 24"	1" to 24"

AL
Hardcote Aluminum construction (standard on MS series Slides),

Material Options
ST = Steel
AL= Hardcote Alum.
D= Delrin
CI= Cast Iron
SST= Stainless Steel
CM = Custom material

S3
1/2-20 UNF drive screw (standard on MS series slides)

Other Options
NS = No drive screw
S1 = 10-32 UNF drive screw
S2 - 1/4-20 UNC Drive screw
S3 = 1/2-20 UNF drive screw
S4 = 1/2-13 UNC drive screw
S5 = 5/8-10 Acme drive screw
S6 = 3/4-5 Acme drive screw
S7 = 3/4-10 Acme drive screw
S8 = 1.0-5 Acme drive screw
S9 = 1.0-10 Acme drive screw
CS = Custom screw - (provide description)
HD1.5 = 1.5" Handwheel
HD2 = 2" Handwheel
HD3 = 3" Handwheel
HD4 = 4" Handwheel
HD6 = 6" Handwheel
HD8 = 8" Handwheel
HD10 = 10" Handwheel
RCH = Ratcheting Crank Handle
D = Digital position indicator
CMT = Custom mounting (provide drawing)
MR = Motor ready (specify motor)
DC = DC motor drive
SM = Smart motor drive (stepping)
Servo = Servo motor drive

Note:

- The X-Axis is always the bottom or primary axis.
- The Y-Axis is the upper, or secondary axis.
- When looking down on the table with the x-axis drive end pointing toward you, the Y-Axis drive is on the right. This is standard or right hand configuration.
- To order a slide table with the Y-Axis drive pointing to the left ask for the left hand version.

GENERIC SLIDES

1049 William Flynn Highway | Suite 300 | Glenshaw, PA 15116
 Phone: 412/ 492-7272 | Fax: 412/ 492-7171 | Email: sales@genericslides.com