



Your Source for Linear Motion and Positioning Solutions.

Specializing in:

**Long Travels
Heavy Payloads
Application Specific Solutions**

Quality Products Since 1971

Terms & Conditions



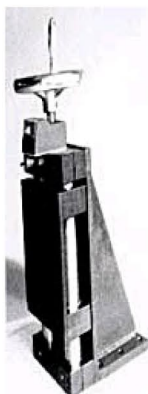
Get Your Quote Today!

Manual Positioning Slides

These slides provide smooth repeatable positioning, of instrumentation, tooling and equipment, via a ridged slide mounting arrangement. The extremely robust construction, including oversized guide rails and high PV bearings allow mounting in virtually any position. (Horizontal, vertical, side mount and body mount.). Cantilevered and end supported gantry type mounting is also possible with little or no concern for deflections. Standard options include Hand-wheel choices, position locks, Engraved dials, and digital position indicators. Use GENERIC SLIDES – Quality Manual positioning slides as an effective and cost efficient solution to your instrumentation, processing, manufacturing and automation system needs.

Applications Include:

- Optics adjustments
- Laser positioning
- Positioning label dispensing equipment
- Positioning marking equipment
- Non-destructive testing
- Fixturing tooling and part locating nests
- Part scanning
- Automatic screw drivers
- Insertion equipment
- Fluid dispensing equipment
- Water-jet cutting
- Routing, drilling and milling spindles and tooling
- Automation devices



Features:

- Travels to 216" inches
- Table widths to 1.75" to 24"
- Delicate to course adjustments
- Heavy payloads
- Smooth motion
- X-Y Tables
- X-Y -Z Multi-Axis units

Construction:

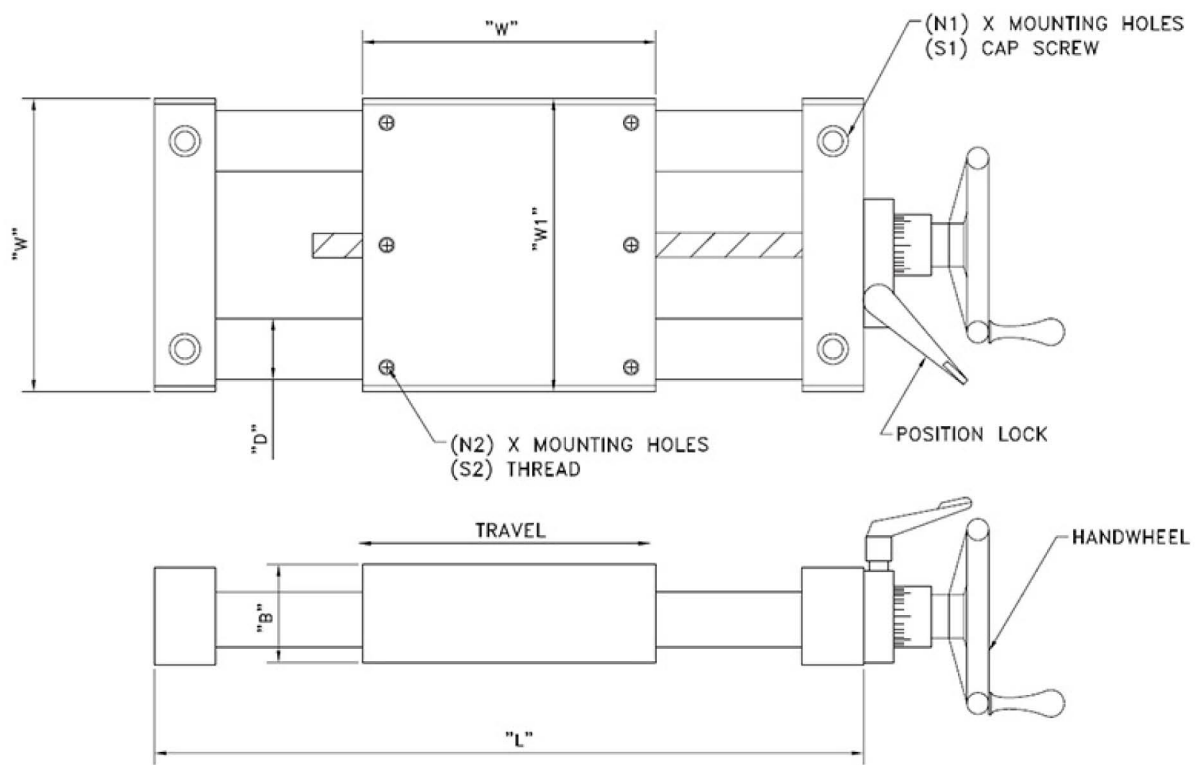
- Position lock
- Rolled thread drive screw
- Adjustable backlash drive screw nut
- Heavy section HardCote™
- Radically oversized guide rails
- High PV composite bearings

Standard Options:

- Engraved position dials
- Digital positional indicators
- X-Y Tables
- X-Y -Z Multi-Axis units
- Longer Travel Units
- Custom Table Sizes
- Custom Mounting Holes



MS Series Linear Slide Table



MS Series - Slide Table Dimensions

Series	"L"	"TRAVEL RANGE"	"W"	"W1"	"B"	"D"	"N1"	"S1"	"N2"	"S2"	PDF
MS200	3.0+T	2.00 - 20.00	2.00	NA	1.08	.50Ø	4	1/4	4	1/4 - 20	PDF
MS315	4.65+T	1.00 - 24.00	3.15	NA	1.57	.75Ø	4	5/16	4	1/4 - 20	PDF
MS400	6.50+T	1.00 - 36.00	4.00	NA	2.13	1.125Ø	4	3/8	4	5/16 - 18	PDF
MS600	8.50+T	2.00 - 72.00	6.00	NA	2.06	1.250Ø	6	3/8	6	5/16 - 18	PDF
MS850	11.0+T	1.00 - 144.00	8.00	8.50	3.75	2.00Ø	8	3/8	8	3/8 - 16	PDF
MS1200	15.0+T	6.00 - 216.00	12.00	NA	4.00	2.00Ø	8	3/8	8	3/8 - 16	PDF
MS1800	21.0+T	6.00 - 216.00	18.00	NA	4.00	2.00Ø	8	3/8	8	3/8 - 16	PDF

How to Order

Part Number = **Series** — **X-Travel** — **Material Option** — **Other Options**

Example = **MS600** — **8** — **AL** — **S3**

MS600	8
MS600 series slide	8" travel on X-Axis

AL
Hardcote Aluminum construction (standard on MS series Slides),

S3
1/2-20 UNF drive screw (standard on MS series slides)

Series	X-Travel
BS45	1" to 16"
MS200	1" to 20"
MS315	1" to 24"
MS400	1" to 36"
MS600	1" to 72"
MS850	1" to 144"
MS1000	1" to 144"
MS1200	1" to 240"
MS1800	1" to 240"
UDH2	1" to 16"
UDH3	1" to 24"
UDH4	1" to 36"
UDH6	1" to 36"
UDH8	1" to 36"
UDH10	1" to 36"
UDL2	1" to 36"
UDL3	1" to 36"
UDL4	1" to 36"
UDL6	1" to 36"
UDL8	1" to 36"
UDL10	1" to 36"
UDC3	1" to 24"

Material Options
ST = Steel
AL= Hardcote Alum
D= Delrin
CI= Cast Iron
SST= Stainless Steel
CM= Custom material

Other Options
NS = No drive screw
S1 = 10-32 UNF drive screw
S2 = 1/4-20 UNC Drive screw
S3 = 1/2-20 UNF drive screw
S4 = 1/2-13 UNC drive screw
S5 = 5/8-10 Acme drive screw
S6 = 3/4-5 Acme drive screw
S7 = 3/4-10 Acme drive screw
S8 = 1.0-5 Acme drive screw
S9 = 1.0-10 Acme drive screw
CS = Custom screw - (provide description)
HD1.5 = 1.5" Handwheel
HD2 = 2" Handwheel
HD3 = 3" Handwheel
HD4 = 4" Handwheel
HD6 = 6" Handwheel
HD8 = 8" Handwheel
HD10 = 10" Handwheel
RCH = Ratcheting Crank Handle
D = Digital position indicator
OMT = Custom mounting (provide drawing)
MR = Motor ready (specify motor)
DC = DC motor drive
SM = Smart motor drive (stepping)
Servo = Servo motor drive

GENERIC SLIDES

1049 William Flynn Highway | Suite 300 | Glenshaw, PA 15116
Phone: 412/ 492-7272 | Fax: 412/ 492-7271 | Email: sales@genericslides.com