

GENERIC SLIDES

Your Source for Linear Motion and Positioning Solutions.

Specializing in:

**Long Travels
Heavy Payloads
Application Specific Solutions**

Quality Products Since 1971
Terms & Conditions



Get Your Quote Today!

Dual Carriage Slides

MS Series - Dual Carriage Slide
Dimensions
How to Order - Part # and Travels



These self-centering slides provide dual platforms for smooth repeatable positioning, of instrumentation, tooling, and equipment via a rigid slide mounting arrangement.

A turn of the hand-wheel advances the slide tables toward, or away from the slide center. As an option the dual carriage slide can be provided with one driven table and one free sliding table. This arrangement has been proven to be useful in supporting large work pieces.

The extremely robust construction, includes oversized guide rails and high PV bearings allow mounting in an extended horizontal position. The slides also allow for a vertical mounted slide to be attached providing movement in the "X" and "Z" axis's.

Standard options include Hand-wheel choices, position locks, Engraved dials, and digital position indicators. Use Generic Slides – Quality manufactured Dual Carriage Slides, as an effective and cost efficient solution to your instrumentation, manufacturing and Automation systems needs.

Applications Include:

- Part centering for robotic pick-up
- Automation devices
- Dual work piece vises for machine tools
- Optics adjustments
- Laser positioning
- Positioning label dispensing equipment
- Positioning marking equipment
- Non-destructive testing
- Fixturing tooling and part locating nests
- Part scanning
- Automatic screw drivers
- Insertion equipment
- Fluid dispensing equipment
- Water-jet cutting
- Routing, drilling and milling spindles and tooling

Features:

- Travels up to 72 inches
- Table widths from 2" to 18"
- Delicate to course adjustments
- Smooth motion

Construction:

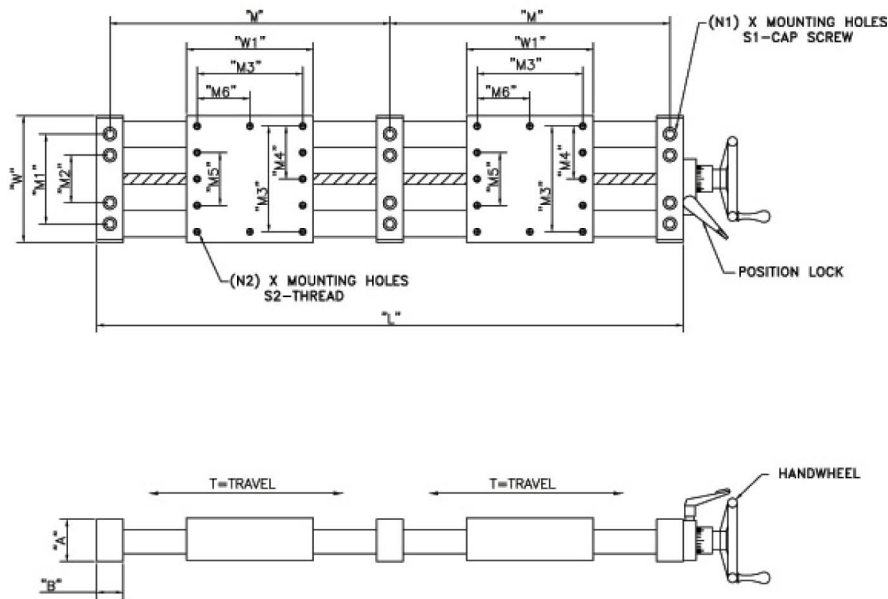
- Position Lock
- Rolled thread, acme or ball screw drive
- Adjustable backlash drive screw nut
- Heavy section construction
- Material options
- Radically oversized guide rails
- High PV contaminant resistant bearings.

Standard Options:

- Engraved position dials
- Digital positional indicators
- Longer Travel Units
- Custom Table Sizes
- Custom Mounting holes



MS Series - Dual Carriage Slide Dimensions



Series	"A"	"B"	"M"	"M1"	"M2"	"M3"	"M4"	"M5"	"M6"	"W"	"W1"	"N1"	"S1"	"N2"	"S2"	"L"
MS200	1.00	0.50	2.5+T	1.25	NA	1.50	NA	NA	NA	2.00	2.00	6	1/4	8	1/4-20	5.50+2T
MS315	1.50	0.75	3.75+T	1.88	NA	2.50	NA	NA	NA	3.15	3.00	6	5/16	8	1/4-20	8.25+2T
MS400	2.00	1.25	5.25+T	2.38	NA	3.25	NA	NA	NA	4.00	4.00	6	3/8	8	5/16-18	11.75+2T
MS600	2.00	1.25	7.25+T	4.25	NA	5.00	2.50	NA	NA	6.00	6.00	6	3/8	12	5/16-18	15.75+2T
MS850	3.00	1.50	9.50+T	7.63	2.38	6.00	NA	2.38	NA	8.50	8.00	12	3/8	16	3/8-16	20.50+2T
MS1000	3.00	1.50	11.5+T	9.13	2.38	7.50	NA	2.50	NA	10.00	10.00	12	3/8	16	3/8-16	24.50+2T
MS1200	3.00	1.50	13.5+T	11.13	5.88	9.00	4.50	NA	4.50	12.00	12.00	12	3/8	16	3/8-16	28.50+2T
MS1800	3.00	1.50	19.5+T	17.13	11.88	15.00	7.50	NA	7.50	18.00	18.00	12	3/8	16	3/8-16	40.50+2T

How to Order



MS600	12	DCAR	AL	S3
MS600 series slide	12" travel each axis	Dual carriage Slide	Hardcote Aluminum construction	1/2-20 UNF drive screw

Series	Travel
MS200	1"to 10"
MS315	1"to 12"
MS400	1"to 18"
MS600	1"to 36"
MS850	1"to 172"
MS1000	1"to 72"
MS1200	1"to 120"
MS1800	1"to 120"
UDH2	1" to 8"
UDH3	1"to 12"
UDH4	1"to 18"
UDH6	1"to 18"
UDH8	1"to 18"
UDH10	1"to 18"
UDL2	1"to 18"
UDL3	1"to 18"
UDL4	1"to 18"
UDL6	1"to 18"
UDL8	1"to 18"
UDL10	1"to 18"
UDC3	1"to 12"

Material Options
AL= Hardcote Aluminum
CI= Cast Iron
CM= Custom material
D= Delrin
SST= Stainless Steel
ST = Steel

Other Options
FS= one table driven, one free sliding
NS = No drive screw
S1 = 10-32 UNF drive screw
S2 - 1/4-20 UNC Drive screw
S3 = 1/2-20 UNF drive screw
S4 = 1/2-13 UNC drive screw
S5 = 5/8-10 Acme drive screw
S6 = 3/4-5 Acme drive screw
S7 = 3/4-10 Acme drive screw
S8 = 1.0-5 Acme drive screw
S9 = 1.0-10 Acme drive screw
CS = Customscrew - (provide description)
SL=Table lock
HD1.5= 1.5" Handwheel
HD2= 2" Handwheel
HD3= 3" Handwheel
HD4= 4" Handwheel
HD6= 6" Handwheel
HD8= 8" Handwheel
HD10= 10" Handwheel
RCH= Ratcheting Crank Handle
D= Digital position indicator
ED= Engraved dial
OMT = Custom mounting (provide drawing)
MR = Motor ready (specify motor)
DC = DC motor drive
SM = Smart motor drive (stepping)
Servo = Servo motor drive